

## Challenges:



As a labour provider whose employees work under the management and supervision of their clients, the sustainability challenges for NBC Group are rather exceptional. It is our people who get to grips with a problem; our people who evaluate the situation and deliver the appropriate solution. Our people are essential in improving life by delivering world-class infrastructure.

The HSEQ Manager is currently responsible for sustainability within the organization and is the only division with a defined responsibility for the environment / sustainability.

Our Social and ethical issues are clearly important to the business, but their main environmental impact is linked to transportation of the workforce in relation to petrol and diesel usage and carbon emissions.

Environmental Impacts, Health & Wellbeing has been on the company's radar since, however it is only since joining the School in 2013 that the company has started to understand how they can apply sustainability to their business in a more coherent manner.

## Impact:

- **Online learning:** The School's online e-learning modules allow NBC Group to be interactive with their staff; as this has the biggest reach to their mobile employees.
- **Advanced Fleet Management:** NBC Group have used the School's resources to develop training for all staff on controlled methods of driving and fitting all vehicles with a monitor, which allows Tracker to monitor speeds and driving techniques. Lower driving speeds and non-excessive braking reduces fuel consumption and thus reduces their carbon footprint.
- **ISO 14001:** The learning gained from the School's resources has assisted to maintain their accreditation
- **Corporate buy-in:** NBC now discuss their progress in the School in their monthly safety meetings. Showing dedication from senior management to continuously improve.
- **Improved PQQ responses:** the resources available through the School have helped NBC better articulate their commitment to the sustainability agenda.

## Value gained:

- **Reduced costs:** The installation of vehicle monitors has led to an approx. £500 per van per year saving. With over 25 vehicles on the road constantly, this has led to significant cost savings.
- **Better understanding client requirements:** the resources of the School have helped them become more in-line with their clients' sustainability requirements and increasing their chances of winning work and retaining clients.

## Fact box



### Company

Nick Building Contractors t/a **NBC Group**

### No of employees

< 100

### HQ

Kent, UK

### Website

[www.nbc-group.co.uk](http://www.nbc-group.co.uk)

### Main contacts

Jag Sidhu, Managing Director

### Services

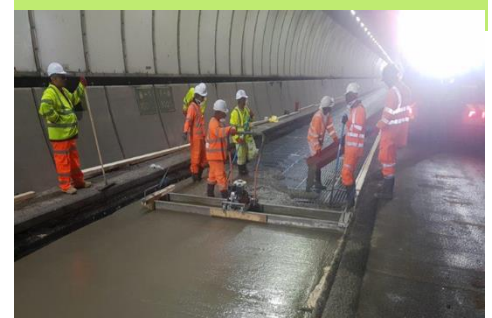
Labour Supply Civil engineering.

FRC & Groundworks Packages.

### About

**Nick Building Contractors LTD (NBC Ltd)** has over 30 years' experience within the civil engineering market and has been responsible for transforming the UK infrastructure with the completion of many high-profile projects.

*"At NBC our mission is to provide expert labour and services to our clients that are on time and on a budget using our hands-*



- **Minimising risk:** with more robust management processes in place, NBC Group are now more confident in their delivery of sustainability initiatives and are raising the standards they expect from their own supply chain.
- **PR / comms opportunities:** NBC Group plan to use their Gold badge to promote the School to their clients and suppliers, and to show their dedication to continuous improvement.

## Future Proofing:

In order for the School to continue to be of benefit to NBC it is important to:

1. Continue to develop the Infrastructure School and ensure that resources are applicable to Infrastructure trades.
2. Workshops to focus more on SME engagement within the Rail & Transport sector, this would provide a great opportunity for sharing knowledge and ideas between smaller businesses.
3. To create a workshop program which is more specific, which look to provide advice to businesses on how to reach sustainability targets on individual projects.

*“The courses are short, simple, engaging, easy to dip in and out of and don’t feel like a burden. The self-assessment process is simply and user friendly.”*



**NBC** | GROUP  
A multi-award winning construction group

*We have a strong experienced supply of labour services working on groundwork’s, reinforcement, concrete and formwork and have, and continue to provide, labour across all the sectors of highways, water, Environmental and amongst others. In addition, Our Diamond Drilling Division are specialists in the field and able to cover all aspects including diamond drilling, floor sawing, wall sawing, wire sawing, controlled demolition such as bursting and crunching as well as all other related work.*

*Having built so many successful partnerships we can support and work with clients on opportunities or tenders, including sites or works that may have in the pipeline currently or in the future nationwide with ECI involvement.*

*We are ROSPA gold Winners 2017,2018,2019 and looking forward in working with the Supply Chain School in gaining Gold and Partnership.*